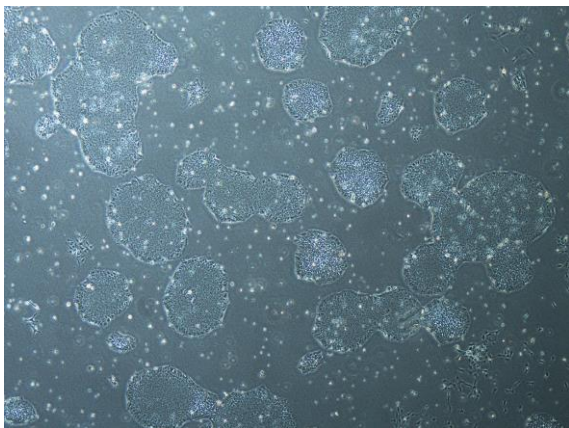
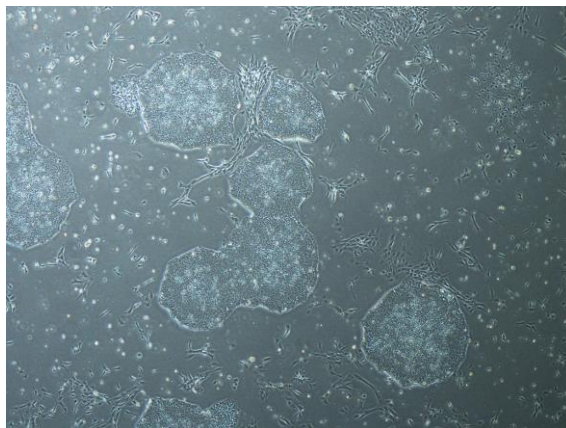


【 CiRA-j-1385 】 Morphology of iPSC colonies

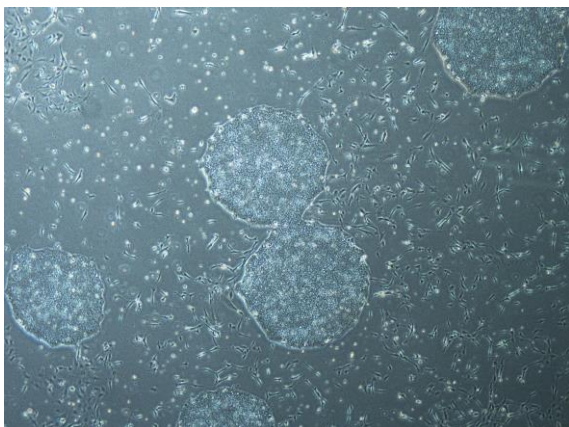
CiRA-j-1385-A: passage-3



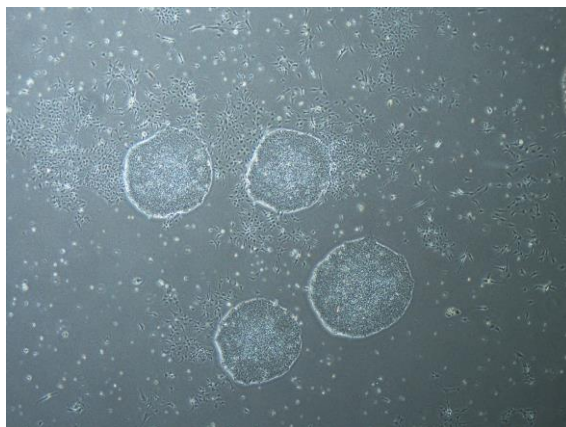
CiRA-j-1385-B: passage-3



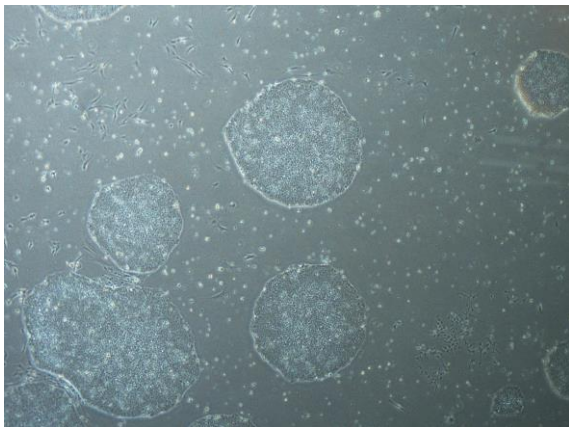
CiRA-j-1385-C: passage-3



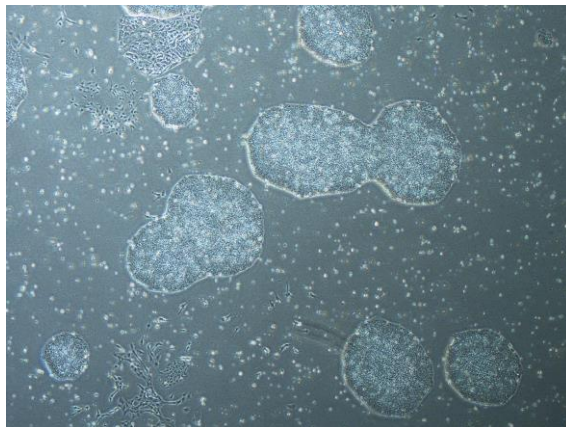
CiRA-j-1385-D: passage-3



CiRA-j-1385-E: passage-3



CiRA-j-1385-F: passage-3



(All images were captured at 4x magnification)